
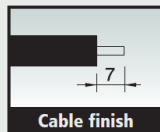


E27 LAMPHOLDERS



E27 porcelain lampholder and snap-on domes

Rated current: 4A
Rated voltage: 750V
Rated pulse voltage: 5KV
Rated temperature: T270
Material: porcelain
Other brackets on request
Approval: 



E27 lampholder

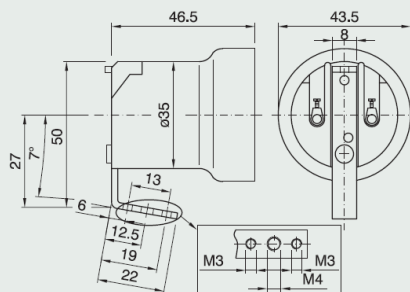
Terminals: screw type for rigid or flexible cables $0.5 \div 2.5 \text{ mm}^2$

Connection: metal bracket with two M3 threaded holes (centre distance 13 mm) and M4 threaded central hole

Screwed shell: zinc-plated steel

Packaging: 200 pieces

code 021273



90/SQ18/MIPDE/E27